



# ROTARY DRYER

Environment Friendly Engineering Solution Company



In Association with SVCH-Technologii, Moscow (Russia)

[www.kerone.com](http://www.kerone.com)

ISO 9001-2008 | ISO 9001-2015 | EMS 14001 | OHSAS 18001

# About Kerone

KERONE now renowned name in serving specialized need of customers with best quality and economical process Heating /cooling and drying products, manufactured in high quality environment by well trained and qualified workforce(special purpose machineries) .

KERONE is pioneer in application and implementation engineering with its vast experience and team of professionals. KERONE is devoted to serve the industry to optimize their operations both economically and environmentally with its specialized heating and drying solutions.

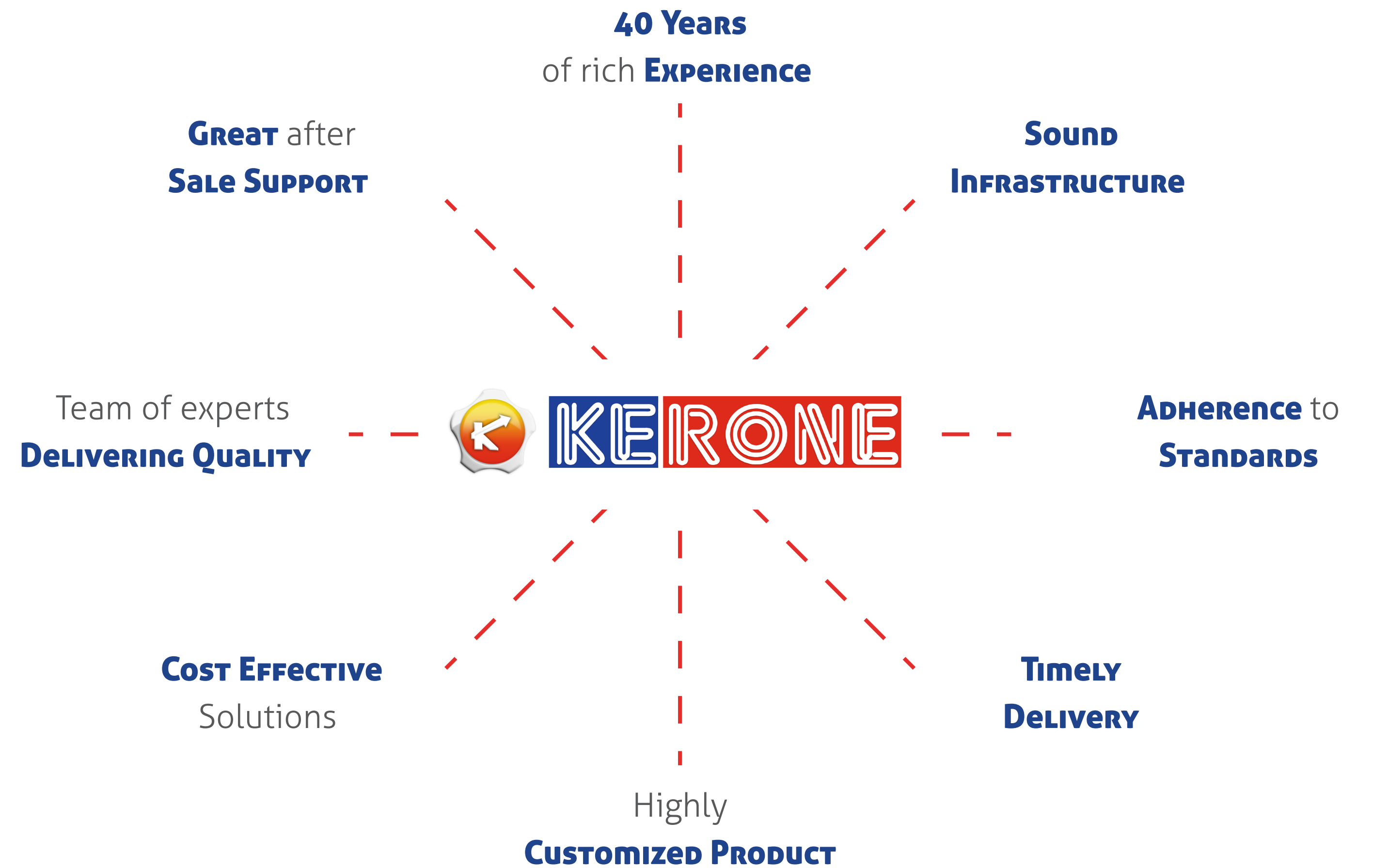
*“Enhance the value of customer operation through our customer need centric engineering solution”*

## ***Mission***

- To enhance the value of customer operation through our customer need centric engineering solution.
- We are committed to provide our customers, unique and best in class products in Industrial heating, drying and cooling segment, with strategic tie-up for the technical know-how with renowned leader in the industry specific segment.

## ***Vision***

- Turn into world leader in providing specialized, top-notch quality and ecological industrial heating, cooling and drying solution across the globe.
- To attain global recognition as best of quality and environment friendly engineering solution company.





## Introduction to Rotary Dryer

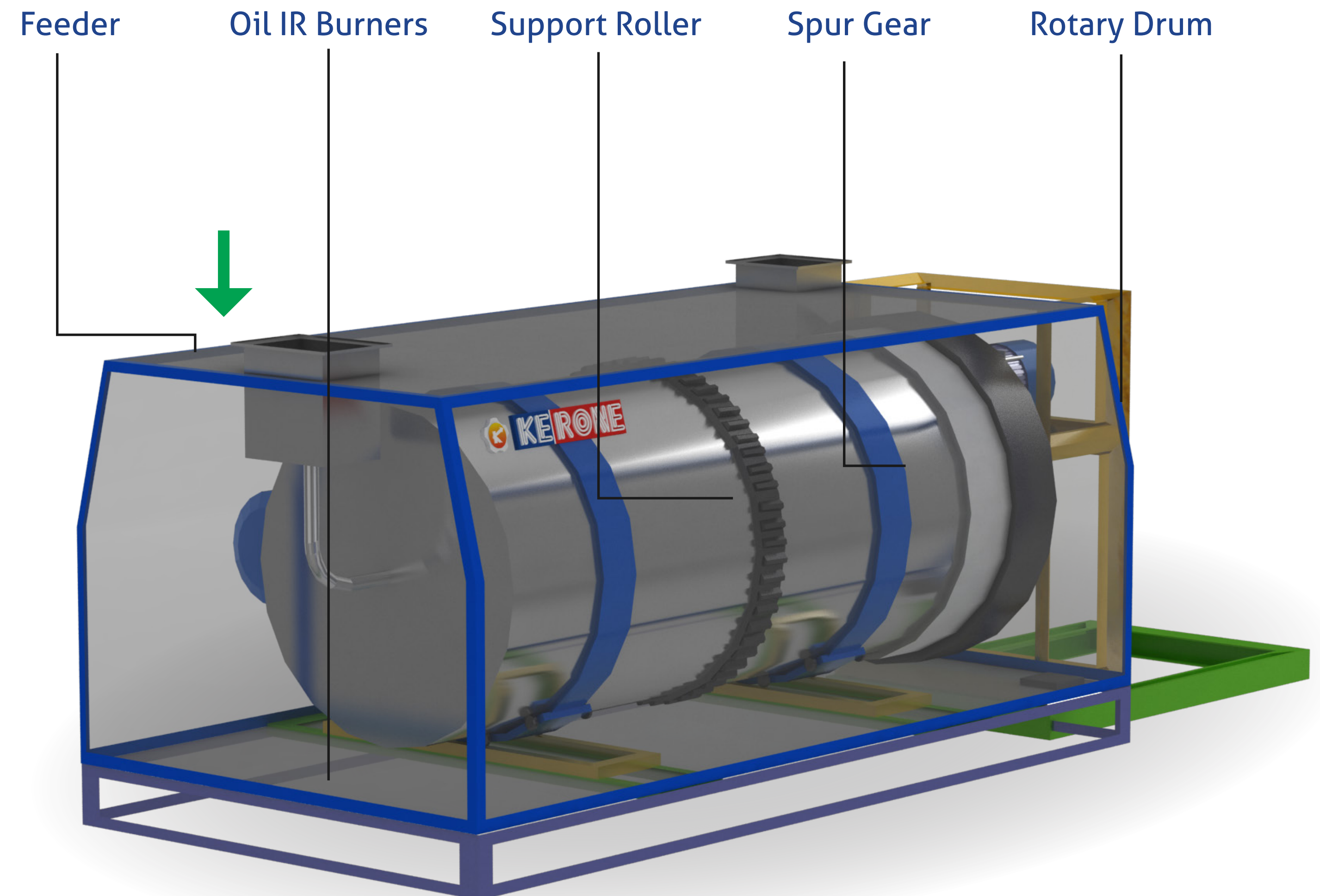
Rotary dryers are one of the most common types of industrial dryer, utilised for large quantities of material with particles of size 10 mm or larger. Typical rotary dryer consist of cylindrical shell made of steel plates slightly inclined (10 to 50) to horizontal to assist the transportation of the wet material fed for the processing, shell is typically 0.3-5 m in diameter, 5-90 m in length and rotating at 1-5.

Rotary dryer shell tube acts as body to transfer the wet feed-stock and number of steam heated tubes are placed symmetrically around the perimeter and rotate with it. Wet material is fed into the upper end of dryer and the material travels through it by virtue of rotation and slope of the shell and dried product is picked as the lower end.

The feed rate, speed of rotation of shell, the volume of heated air or gases, and their temperature are so regulated such that by the time material reaches to discharge point of rotary dryer it's accurately dried.

**kerone/rotary-dryer**

[www.kerone.com/rotary-dryer.php](http://www.kerone.com/rotary-dryer.php)

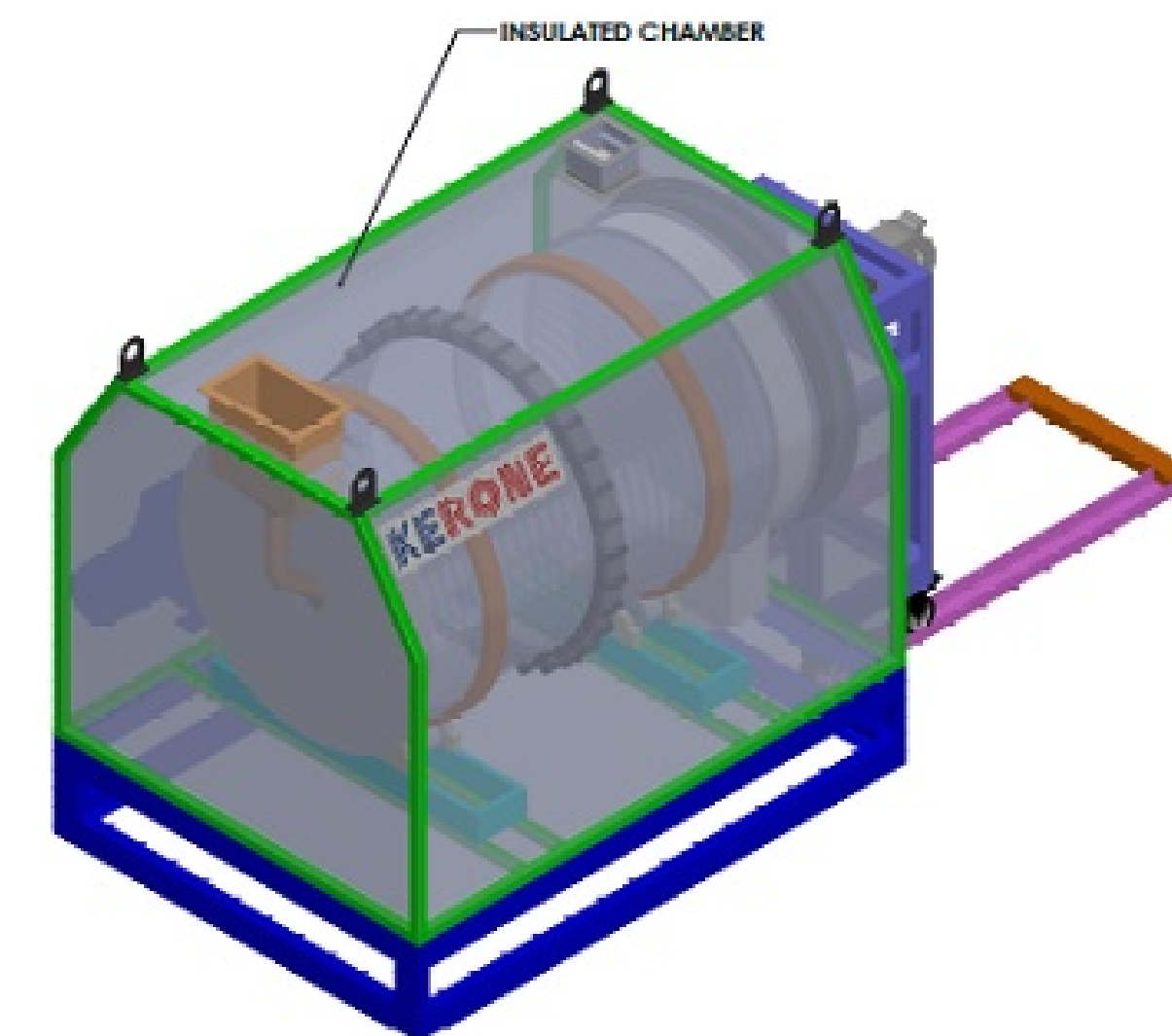
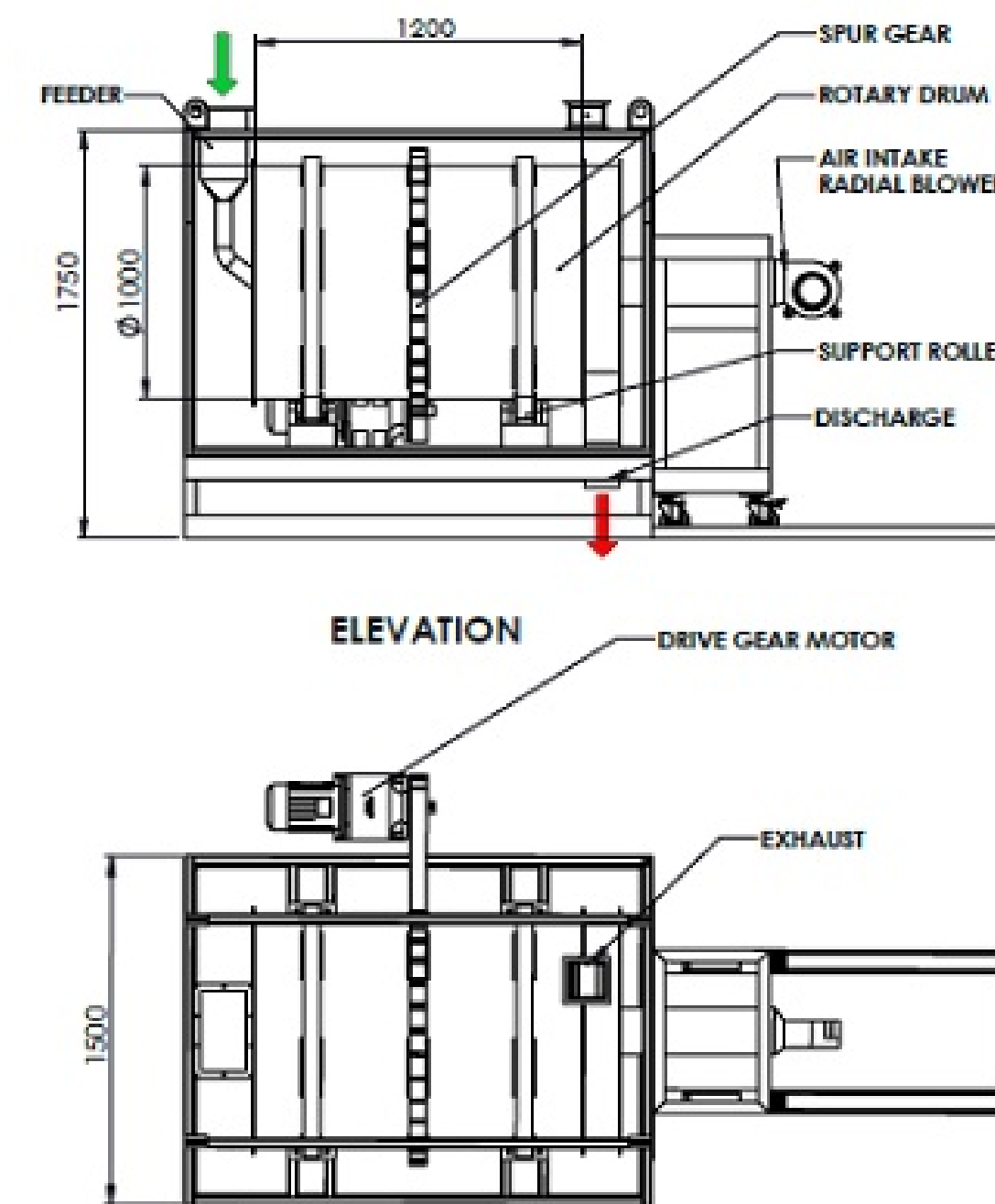


# Features

- Kerone build the rotary dryer are having robust construction.
- Kerone provide rotary dryer with various lifter options based material.
- Kerone provides the option of either co-current or counter-current air circulating rotary dryer.
- Rotary dryer designed by Kerone can be utilised for higher temperature drying.
- We design and build rotary dryer with wide range of size and dimensions to handle wide range of material.
- We provide fully automated rotary dryers by means of PLC/SCADA systems.
- Rotary dryers are suitable of continuous drying operation.
- This type of dryer provide relatively longer residence time.

# Application

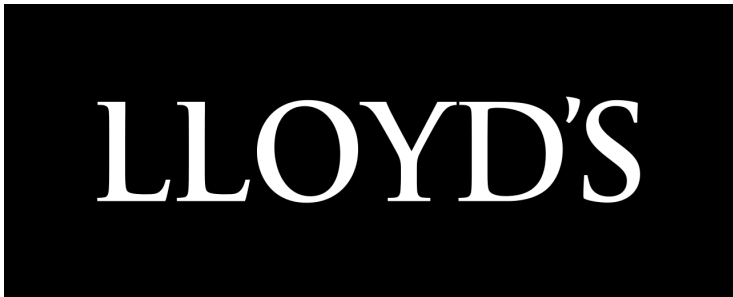
- Food and Dairy Industry.
- Agriculture and Animal Feeds.
- Wood and Paper Industry.
- Metal Industry
- Foundry Industry.
- Ceramic Industry.
- Sand Industry.
- Rubber Industry.
- Chemical and Pharmaceutical Industry.



3D View



# Trusted Partner





# Our Clients





## UNIT I

B/10, Marudhar Industrial Estate, Goddev Fatak road, Bhayander(E), Mumbai-401105

Phone : +91-22-28150612/13/14

## EMAIL

info@kerone.com | sales@kerone.com  
marketing@kerone.com

## UNIT II

Plot No. B-47, Addl. MIDC Anandnagar, Ambarnath (East), Dist. Thane- 421506

Phone : +91-251-2620542/43/44/45/46

## WEBSITE

www.kerone.com | www.kerone.net  
www.keroneindia.com